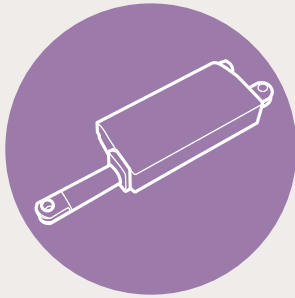
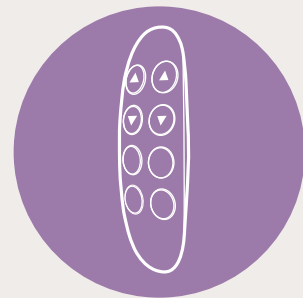


COMPACT & POWERFUL LINEAR ACTUATOR SYSTEM

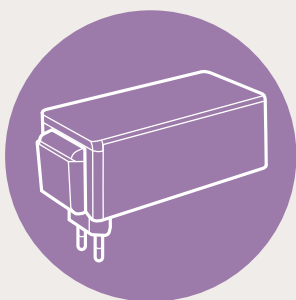
Wireless Direct Cut Solution - Make Your Design Out of Limitation



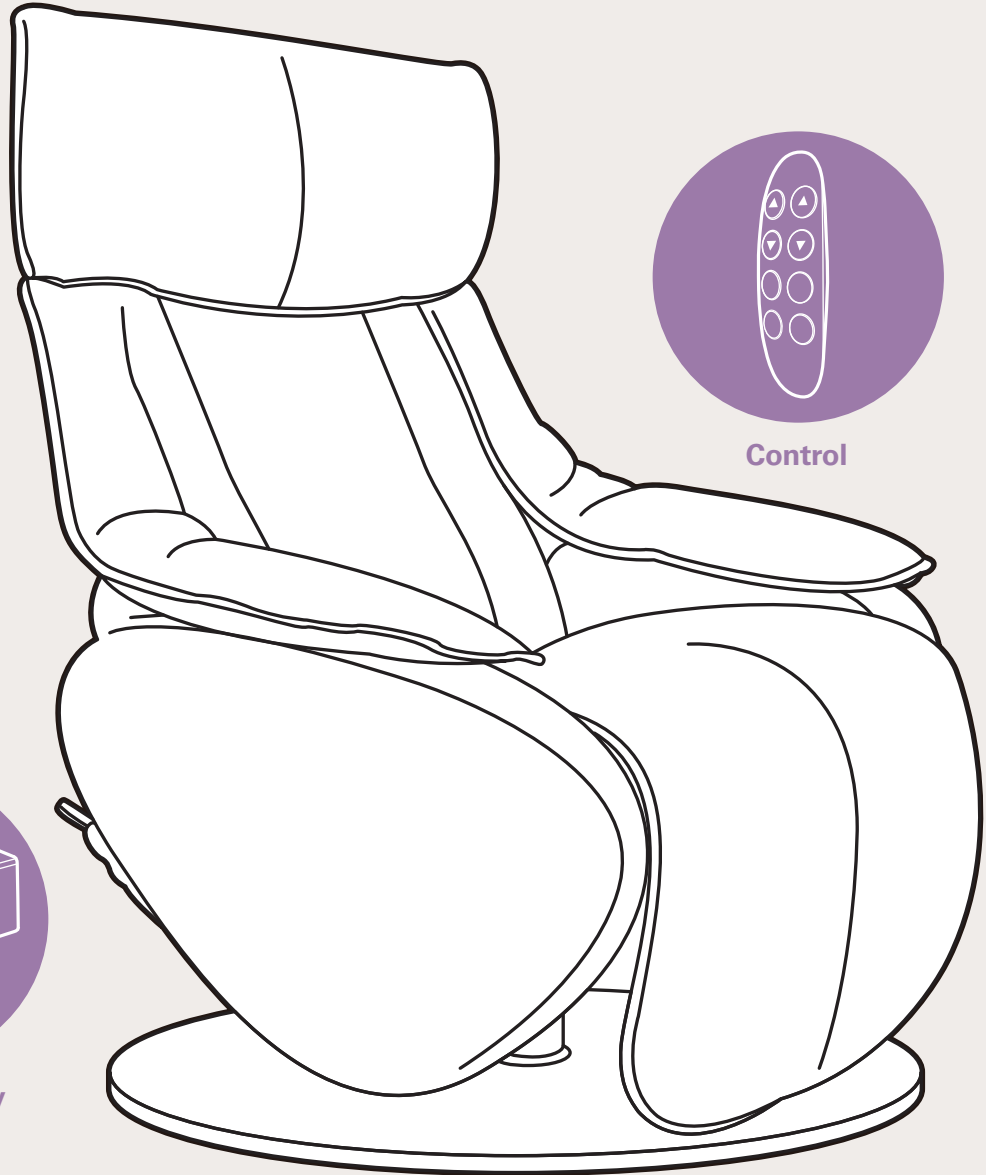
Actuator



Control



Power Supply



Smooth & Powerful Movement Linear Actuator - TA38 & TA43

- Palm sized design (TA38)
- Max load: 4,000N (TA43)

Mobile Battery Solution Backup Battery - TBB8

- Detachable battery
- Low standby power consumption

Universal Charging Design Power Supply - TP11

- SMPS transformer
- Removable plug support

Flexible Operation Control - TFH25

- Max Buttons: 10
- Wireless hand control



TA38

Voltage of motor

Maximum load

Maximum speed at full load

Stroke

Minimum installation dimension

Operational temperature range

Options

24V DC, or 24V DC (PTC)

1500N in push/pull

7.9mm/s

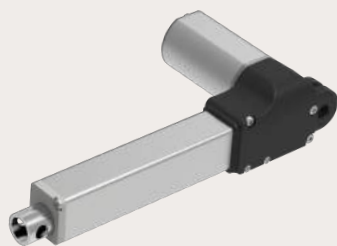
(with 1500N in a push or pull condition)

≥ 20~200mm

≥ Stroke +115mm

+5°C~+45°C

Hall sensors



TA43

Voltage of motor

Maximum load

Maximum speed at full load

Stroke

Minimum installation dimension

Operational temperature range

Options

24V DC, or 24V DC (PTC)

4000N in push/pull

5.4mm/s

(with 2000N in a push or pull condition)

≥ 20~300mm

≥ 100mm

+5°C~+45°C

Hall sensors



TBB8

Battery type

Capacity

Input voltage

Output voltage

LED indication

Built-in buzzer

Low standby power consumption

Detachable bracket

Lithium

1.5Ah

24V DC

24V DC, 1.5A



TP11

Transformer type

Input voltage

Maximum output

Plug support

Options

SMPS

100~240V AC

29V DC, 1.8A

EU, USA, AUS, UK, JPN

Multiple wall mount plugs,
backup battery



TFH25

Maximum available buttons 10

Wireless hand control, compatible with TRF (RF receiver)



Europe

Tel +33 (0)1 7482 5051
sales.eu@timotion.com

Sales Office in Germany

Tel +49 2241 1487902

Sales Office in Italy

Tel +39 0362 288456

Copyright © 2019 TiMOTION. All rights reserved.

