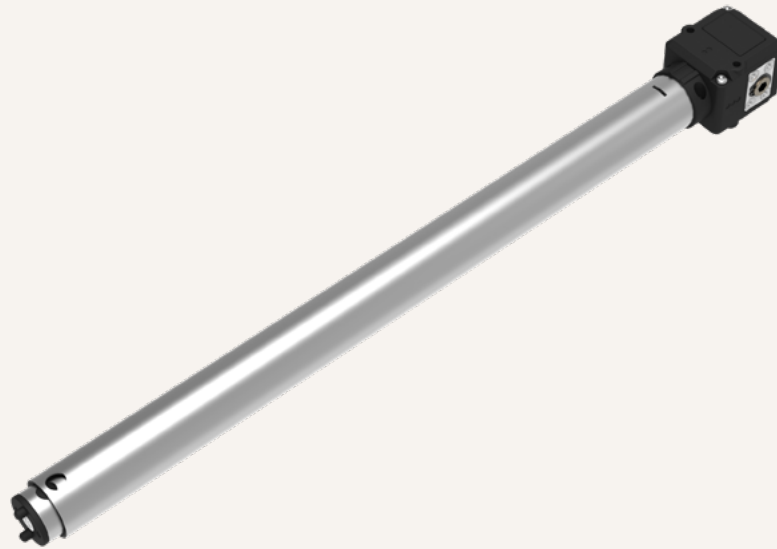


TBS9

series



Product Segments

- **Ergo Motion**
- **Industrial Motion**

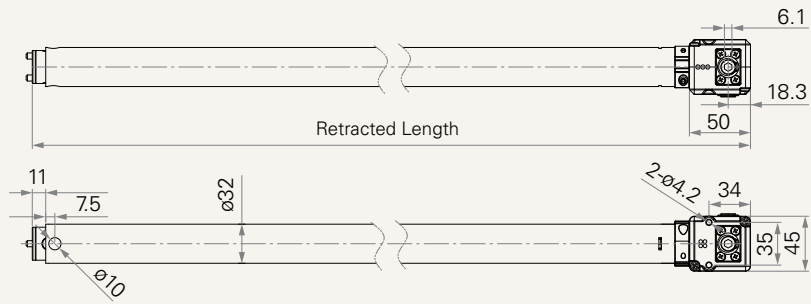
The TBS9 is designed especially for height adjustable desk applications. It can also be used for other motorized or manual drive applications. The unique worm gear system reduces the noise level of the gear box when running the adjustment.

General Features

Ratio	13 / 17
Recommended stroke	50~800mm
Minimum retracted length	$\geq (\text{stroke} / 2) + 165 \text{ mm}$
Maximum rated load	1000N

Drawing

Standard Dimensions
(mm)



Load and Speed

CODE	Spindle (mm)	Gear Ratio	Rated Load (N)	Rated Torque (A)	Lead (mm/turn)	Typical Speed (mm/s)
A	2.5*4, 2.0*5	13 / 17	1000	5.3	20	(TGM motor speed / 60)*(13 / 17)*20
B	2.3*2, 2.3*2	13 / 17	1000	3.1	9.2	(TGM motor speed / 60)*(13 / 17)*9.2

Note

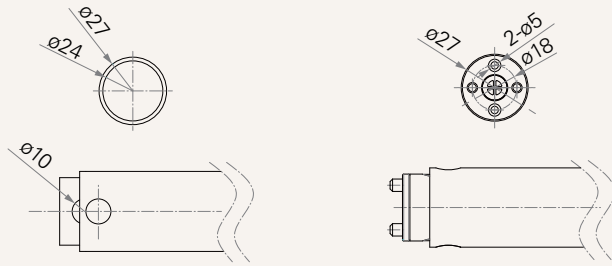
1 Parameters above are from tested average, please refer to approval drawing for final value.

Spindle Options	R = Right
Load and speed	See page 2
Stroke (mm)	50 - 800
Retracted Length (mm)	Minimum retract length needs to $\geq (\text{stroke} / 2) + 165$
Input Torque See page 4	1 = Coupler hole, 6 mm
Drive Shaft	1 = Gear = 1, A = C 2 = Gear = 1, B = D 3 = Gear = 2, AB = CD 4 = Gear = 2, AD = BC
Fixation of Mid-Tube (mm) See page 4	1 = Hole ($\varnothing 10.0$)
Front Attachment (mm) See page 4	0 = Punched hole on inner tube ($\varnothing 10.0$) 1 = Plastic

Front Attachment (mm)

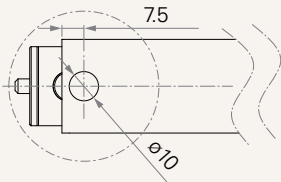
0 = Punched hole on inner tube
($\varnothing 10.0$)

1 = Plastic



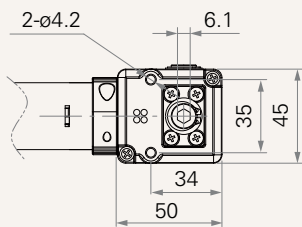
Fixation of Mid-Tube (mm)

1 = Hole ($\varnothing 10.0$)



Input Torque (mm)

1 = Coupler hole, 6



Terms of Use

The user is responsible for determining the suitability of TiMOTION products for a specific application. TiMOTION products are subject to change without prior notice.